

# JAYJEFFERS

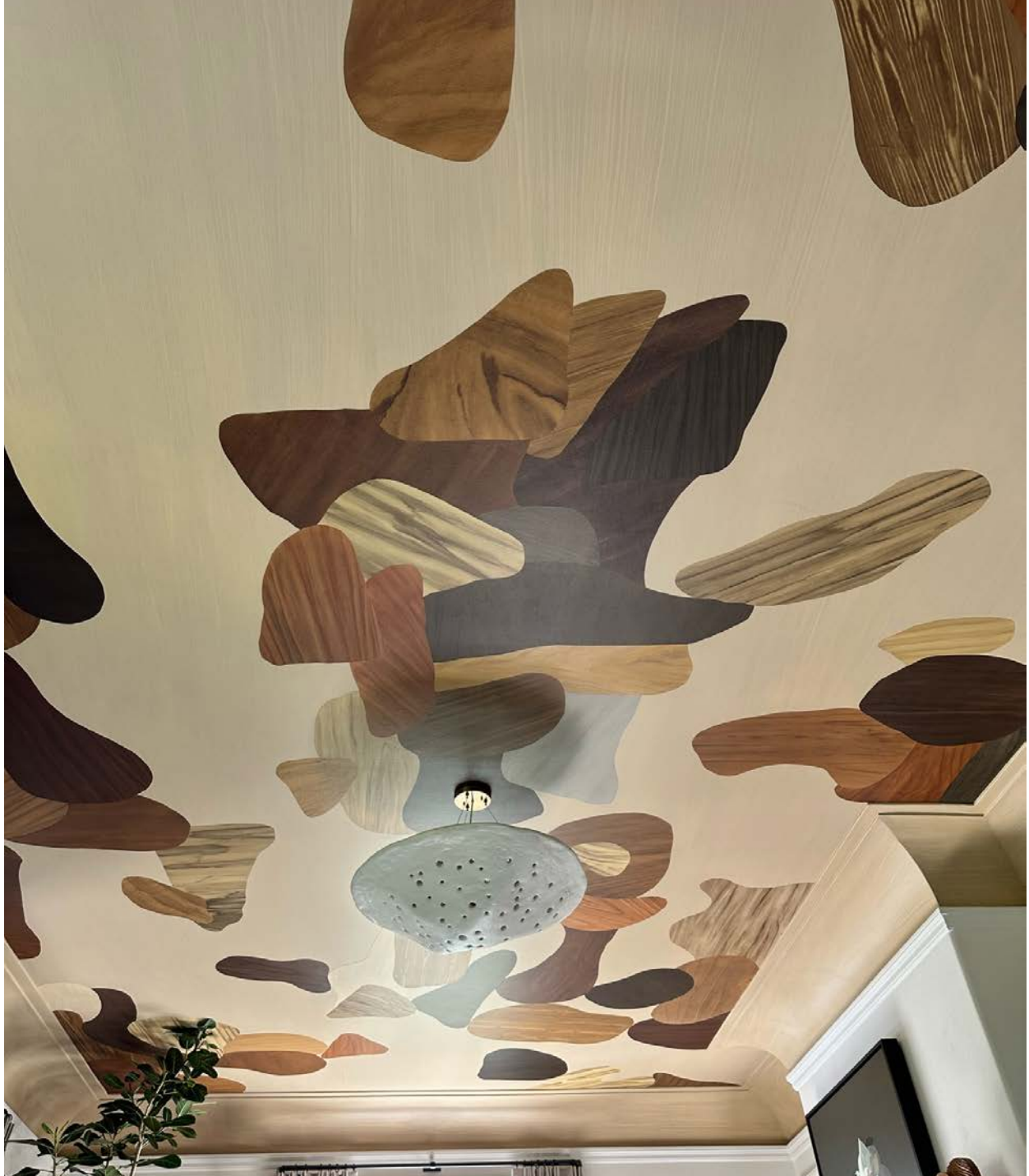
project: SF SHOWCASE 2024 | 2898 BROADWAY SF CA  
OFFICE PLAN

date 2024.03.05

No.

drawn by AL

scale 1/4" = 1'-0"



**Ceiling Mural**

**Contact**

Willem Racké Studio  
415.252.1341  
1811 Folsom Street San  
Francisco, CA  
94103





**Guillermo & Chambron Denis Lounge Chairs, circa 1960**  
*Vintage, newly reupholstered*

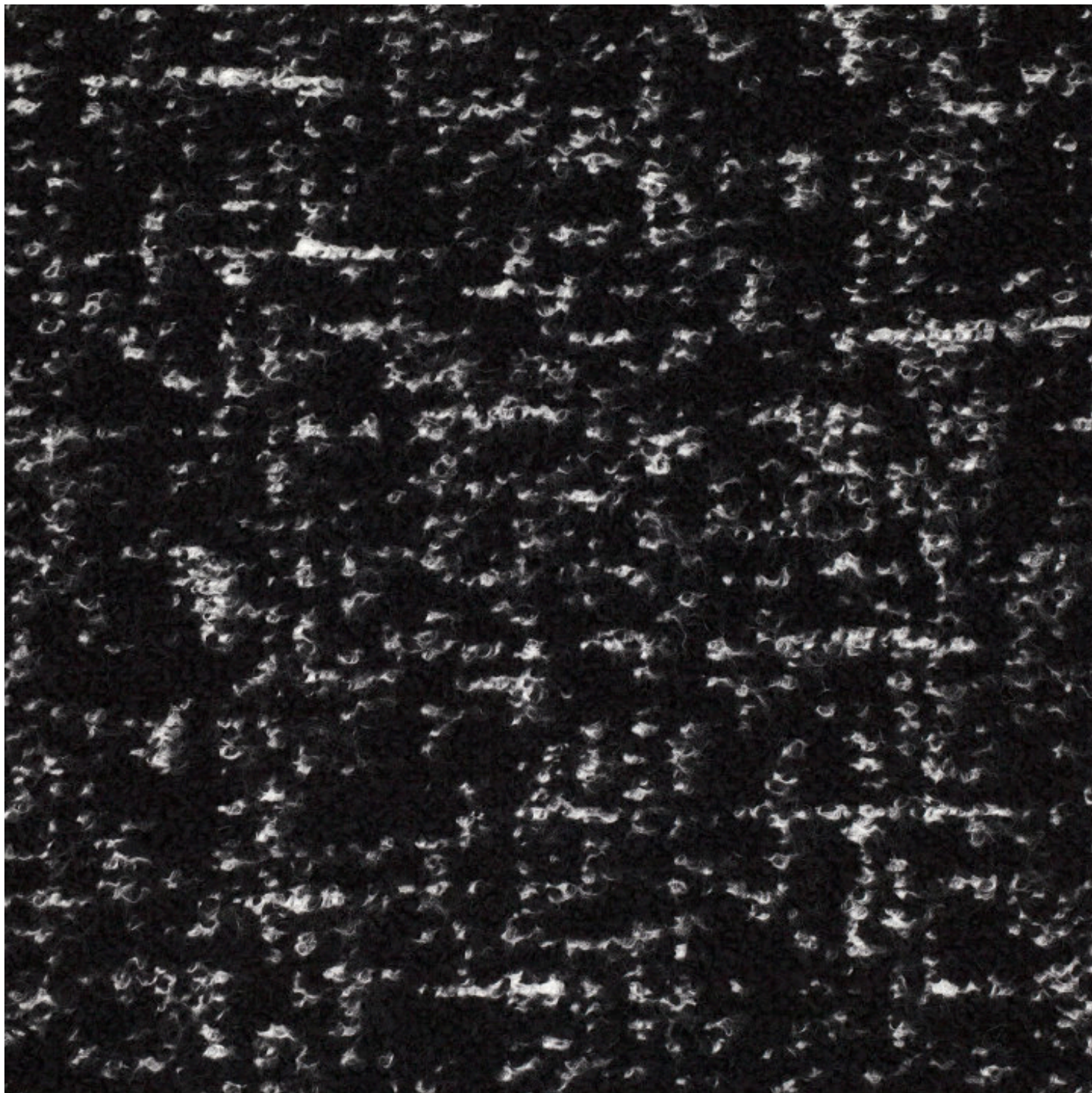
Upholstery: Speck in Noir by Kirkby Design

\$20,000 (pair)

**Contact**

Jay Jeffers  
415.921.8880  
1035 Post Street  
San Francisco, CA  
94109





## Speck Noir

K5237/02

Wool Blend  
Collection: Volume

4 Available Colours





**Octagonal Ottoman**

31" x 31" x 16"

Upholstery: Bardi in Chesnut by Mark Alexander &  
5/32" Leather Piping in Black Bean by Samuel & Sons

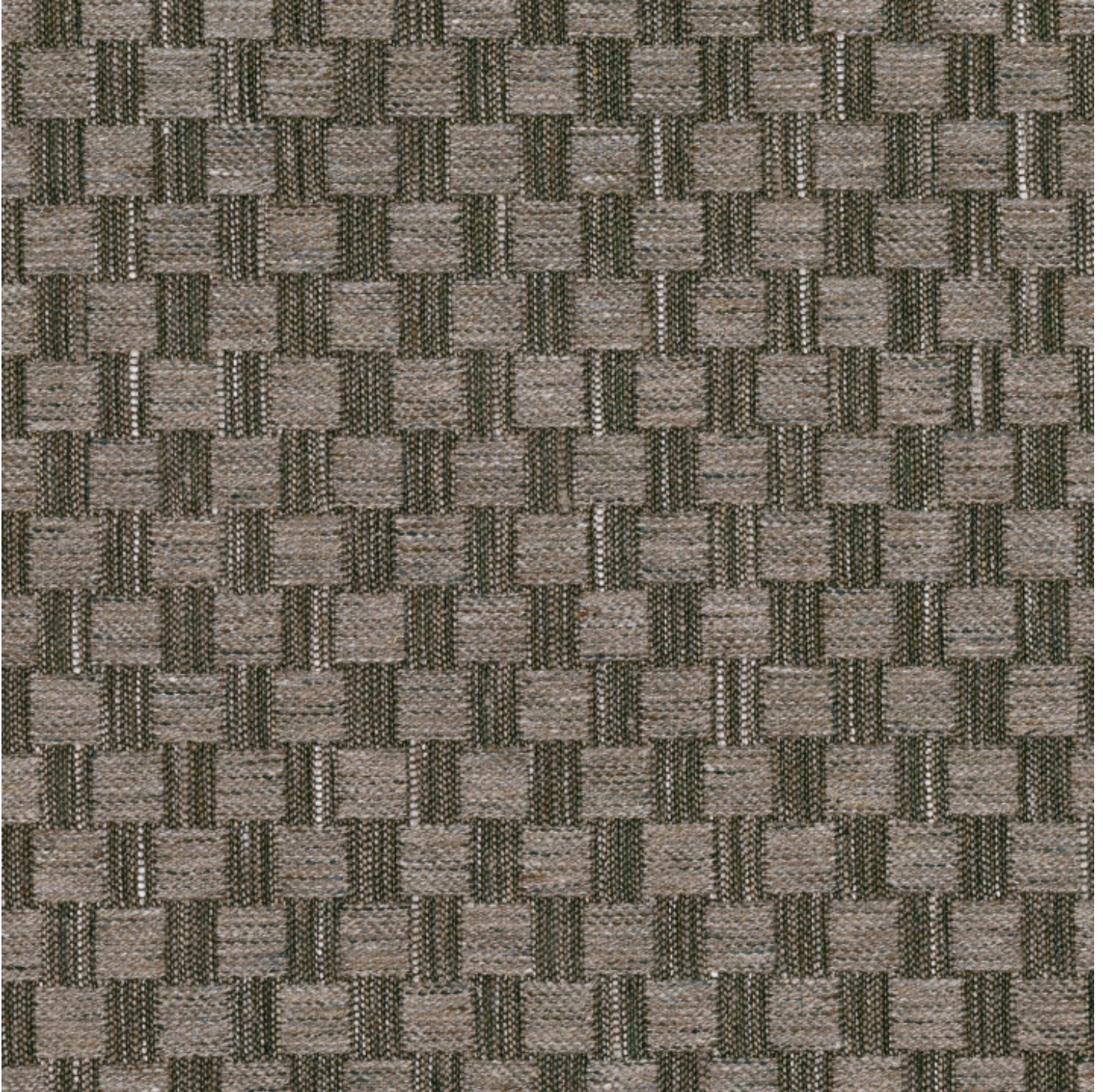
\$11,500

**Contact**

Jay Jeffers  
415.921.8880  
1035 Post Street  
San Francisco, CA  
94109



MARK ALEXANDER



## Bardi Chestnut

M570/05

Textured Weave  
Collection: Moderna

5 Available Colours





5/32" LEATHER PIPING - ITEM: CT-34243 / COLOR: 2040 BLACK BEAN

CATEGORY [CORD WITH TAPE](#)  
FIBER  
CONTENT 85% LH; 15% PVC  
COLLECTION [LEATHER PIPING](#)  
BOOK [ESSENTIALS: LEATHER & FAUX LEATHER PIPING](#)  
[FAN DECK](#)  
DESIGNER [SAMUEL & SONS](#)  
DIMENSIONS

# COUP D'ETAT



## **Shell Lounge Low Armchair** **by Brent Warr**

*Contemporary*

United States

Crafted by hand, the Shell Lounge Low Armchair is a playful yet demanding presence that explores a new way of thinking in regards to turn of the century Victorian furniture. Torn down, re-built, and formed, this settee is a unique functional art piece constructed from discarded Victorian era furniture.

The Shell Lounge Low Armchair is made from a complex plaster, pulp, and black paint mix and upholstered in a dark green boucle by COUP STUDIO FABRIC.

**Dimensions:** 29" W x 34" D 41" H  
SH: 19" | SD: 20" | AH: 21"  
Customizable.

**Materials:** Epoxy, Wood, Pulp, Plaster, Paint, Sealant, Upholstery

**Item Number:** UC-WARR-SHELL-LOUNGE-ARM

**\$12,680**

**Please note:** All plaster furniture and lighting are handmade, making each piece unique. Inconsistency in texture, shape, and color may occur due to its natural material and curing procedures. Subject to upcharge.





Brent Warr is an artist and furniture maker who creates pieces that evoke emotion, allowing viewers to reach a more imaginative part of themselves. Warr designs and produces collectible furniture, lighting, and sculptural art by incorporating the mediums of plaster, epoxy, wood, and paint.

From his studio in Bainbridge, GA, Warr begins with abstract drawings, which he transforms into functional and sculptural forms. Building every piece by hand, Warr applies a complex mixture of plaster, pulp, and epoxy to his designs in layers, then meticulously sculpts and sands them to achieve objects of beauty. Working in a variety of mediums, he pushes the limits of material and craftsmanship; his pieces are described as bold, with visual depth but restraint.

As a child, his parents nurtured his creative ability by immersing him in nature and exposing him to antique furniture and art. This passion continued through his education and into his early career. He graduated from the College of Architecture, Design, and Construction at Auburn University and then went to work for esteemed firms Meyer Davis Studio and Yabu Pushelberg in New York City. These experiences honed his eye for design and exposed him to global collective design.



He launched his inaugural Woodfin Collection at IFCC in 2021, and it quickly gained recognition in the high-end design community; his works have been featured in esteemed publications, including Elle Decor, Architectural Digest, and Interior Design Magazine. His current body of work includes one-of-a-kind pieces, limited edition pieces, as well as a collection that can be ordered as production pieces and is highly customizable.



# ORO DINING CHAIR

CHRIS WOLSTON



DESIGNER  
Chris Wolston

ORIGIN  
Colombia

PRODUCTION  
Made to Order

DATE  
2021

DIMENSIONS  
L 17" x W 17.7" x H 31.5"  
Seat Height: 18"

## CHRIS WOLSTON

Chris Wolston is an American artist and designer based in New York and Medellín, Colombia. His thoughtfully conceptualized and deliberately fabricated work — which ranges from furniture and lighting to installation and sculpture — rigorously blends traditional techniques and materials with a wry, contemporary realism, arriving at an entirely original postmodern aesthetic imbued with material fluency and environmental urgency.



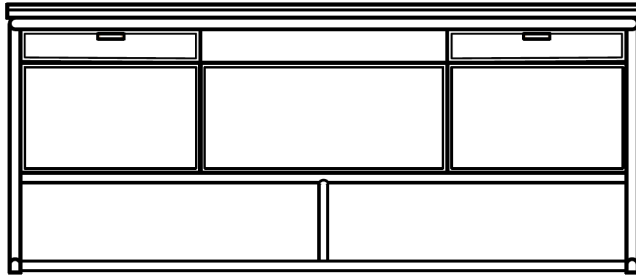


**\$24,050**

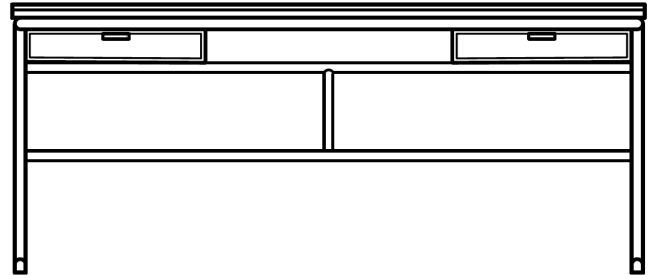
**Contact**

HEWN  
415.962.7833  
299 Kansas Street  
San Francisco, CA  
94103

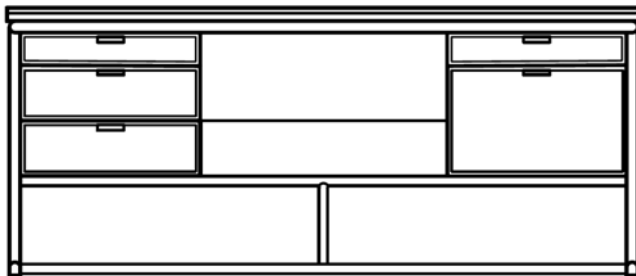




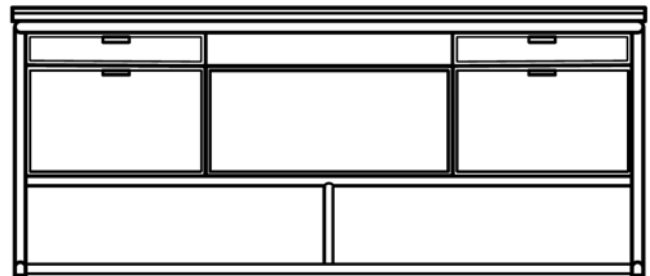
Conf A: Bookshelf Front with 2 Pencil Drawers



Conf B: Full-Depth Pencil Drawers Only



Conf C: Two Full-Depth Drawers Boxes below with Two Full-Depth Pencil Drawers



Conf D: Back to Back Bookshelf and Drawer Boxes below with Two Full Depth Pencil Drawers

## DOMAIN DESK

One's work is one's purpose.

Welcome to Domain.

Designed to support focused work and invite engagement.

Highly considered details on each face and every edge.

Functional components are held by a structure with a confident stance. The Bookshelf front presents one's books & belongings. Drawer options for everything from paperclips & pencils to files & flasks keeping life organized and energized. The work surface comforts the wrists with a downturned edge while an upturned lip catches that rogue pencil.

Honoring the analog realm for writing with pens and reading real books.

Good ideas happen here.

## DIMENSIONS

Available 30" high in two standard widths:

64" wide x 30" high

72" wide x 30" high

And two standard depths:

26.5" deep or 30" deep

## WOOD/FINISH

Solid Wood construction in Walnut, White Oak and other woods upon request.

Domain Hand-rubbed oil finishes available in clear or tinted.

TB standard finishes available upon request

Leather belts and leather & brass drawer pulls available in five colors.

Options to add-on: Charging port, wire managing grommets or modesty panel.





ANDON ALCHEMY STUDIO  
LAMP WITH GREEN BANDED  
ONYX BASE AND HANDLE  
ANDON COLLECTION

SHOWN IN CAST BRONZE AND CAST  
GLASS. HAND FABRICATED AND  
FINISHED USING THE TRADITIONAL  
PROCESSES. THE CRAFTSMANSHIP  
AND DETAILING ARE HALLMARKS  
OF PAGANO STUDIOS.

BRASS IN POLISHED AND SATIN  
FINISHES

CAST GLASS LENS WITH CUSTOM  
SWIVEL

OVERALL HEIGHT: 25"

LENGTH OF ARM: 28"

100 WATT DIMMABLE LED

HAND BUILT AND FINISHED IN  
HUDSON VALLEY, NY.

JOSEPH PAGANO  
STUDIOS

**\$11,800**

**Contact**

UNA MALAN  
415.913.7219  
101 Henry Adams Street #330  
San Francisco, CA  
94103

[INFO@JOSEHPAGANO.COM](mailto:INFO@JOSEHPAGANO.COM)  
[WWW.JOSEHPAGANOSTUDIOS.COM](http://WWW.JOSEHPAGANOSTUDIOS.COM)

# JOSEPH PAGANO STUDIOS

## ABOUT

JOSEPH PAGANO HAS BEEN AN ARTIST AND DESIGNER FOR OVER 30 YEARS. HE HAS BEEN CREATING UNIQUE MODERN LIGHTING AND GLASS SCULPTURES SINCE HIS YEARS AT THE UNIVERSITY OF THE ARTS. WITH A MASTERY OF SKILLS IN GLASSBLOWING AND FABRICATION, HE CUSTOM DESIGNS AND BUILDS EACH STYLE BY HAND, MERGING RAW MATERIALS LIKE GLASS, WOOD AND METALS INTO TIMELESS DESIGNS.

AS AN ARTIST AND DESIGNER HE STATES THAT NATURE HAS ALWAYS BEEN A HUGE SOURCE OF INSPIRATION FOR HIS WORK, PROVIDING HIM WITH AN INFINITE PALETTE TO CREATE FROM. HIS DESIGN PROCESS IS CONSTANTLY EVOLVING, COMBINING OLD WORLD CRAFTSMANSHIP WITH MODERN DESIGN. EVERY PIECE HE CREATES IS METICULOUSLY CRAFTED AND DETAILED.

ALL OF THE FINISHES ARE APPLIED WITH HIS YEARS OF EXPERIENCE AND REFINEMENTS. MUCH OF THE COLLECTION IS A PROCESS OF WHAT HE CALLS SPONTANEOUS DESIGN AND CONTROLLED ACCIDENTS, ALLOWING THE MATERIALS TO REVEAL THEIR HIDDEN POTENTIAL. HE WILL OFTEN SPEND WEEKS STUDYING THE ELEMENTS HE USES BEFORE EXECUTING AN IDEA. HE IS CONSTANTLY PUSHING THE PROCESS OF HAND BUILT DESIGN, CREATING WORKS THAT MEET HIS EXACTING STANDARDS.

JOSEPH OFTEN COLLABORATES WITH DESIGNERS AND ARCHITECTS WHO SEEK OUT HIS DISTINCTIVE VISION, PRODUCING UNIQUE WORKS WHICH ARE CUSTOM TAILORED TO MEET THEIR CLIENTS NEEDS.





# COUP D'ETAT



*Shown in Natural Bronze*

**Tallow Drink Table**  
*by Refractory*  
*Contemporary*  
United States

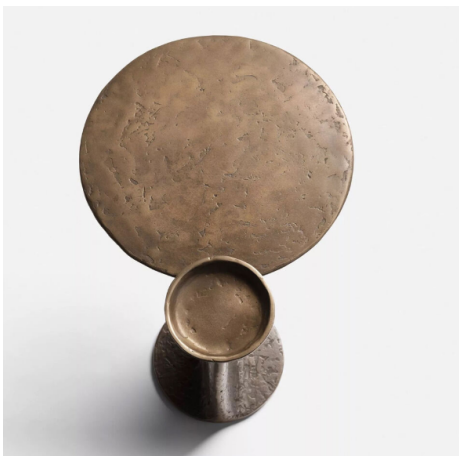
The Tallow Drink Table is a versatile and whimsical cast bronze piece.

Dimensions: 20.25" W x 15" D x 24.25" H  
Upper Top: 5" Dia. | Lower Top: 15" Dia. x 19.5" H  
Weight: 85 lbs

Cast Bronze: Artefact | Cinder | Jet Black | Muslin | Natural | Otter | Polished | Silver Dollar | Wishbone

TS-R-TLW.DRK.01

\$8,450



111 Rhode Island Street, Suite 1 San Francisco, CA 94103 P. 415 241 9300  
100 N Robertson Blvd, Los Angeles, CA 90048 P. 323 825 5880  
E. [info@coupdetatsf.com](mailto:info@coupdetatsf.com) **COUPDETATSE.COM**



Founded in 2021 by Angie West from Texas and Alberto Vélez from Bogotá, Refractory is a furniture, lighting, and object design studio based in Chicago. The studio conceives and produces rigorously crafted works in a language that is distinct within American and contemporary design landscapes. Layering traditional methods with modern tools, Refractory is both an evolution and an extension of a community of artisans who seek to create in the space where art meets collectible design.

The studio's inspiration stems from a profound appreciation for the frontier's terrain and geology. Each creation is unique, born from heat, chemical reactions, and human touch, resulting in variations and imperfections. An authentication code ensures genuineness and origin.

Refractory shares space with its sister company, West Supply—an esteemed design, art fabrication studio, foundry, and glassworks atelier. Here, skilled industrial designers and artisans utilize traditional techniques infused with modern methods.





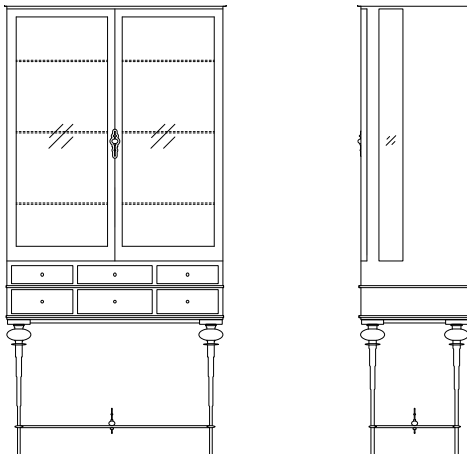
BAKER + HESSELDENZ  
S T U D I O

Baker + Hesseldenz is an Arizona based furniture maker that gives Quaker simplicity a punk rock edge. They believe design influences culture - culture shapes values - and values determine our future.

Available at SLOAN MIYASATO

101 Henry Adams St. Suite 215  
San Francisco, CA 94103  
Tel: 415.431.1465

**\$27,530**



18 1/2"D x 78"H x 37"W

lighting may be added for an up-charge  
wall mounting is required; installation instructions are included

## MADAM CURIO CABINET

Drawing inspiration from the minarets atop the mosques in Istanbul, Turkey. Madam Curio, with its delicate hand cast bronze base provides the perfect home for the display of a treasured collection of curiosities.



*Pictured with cerused rift sawn white oak with cast French black bronze legs*

# COUP D'ETAT



## **Oyster Pendant Perforated** *by Brent Warr*

*Contemporary*

United States

Inspired by oyster and scallop shells, the Oyster Pendant explores the juxtaposition between raw material and beauty. These pieces are composed of plaster, paper pulp, and steel and come in perforated or smooth shells.

Every size can be used as a flush mount pendant or can be hung with blackened brass chain for a more elongated chandelier. Each piece is unique and made to order and is available in either stark white or custom colors.

**Please note:** All plaster furniture and lighting are handmade, making each piece unique. Inconsistency in texture, shape, and color may occur due to its natural material and curing procedures. Subject to upcharge.

**Dimensions:** 28" Dia, 34" Dia, 40" Dia x 8" H  
Customizable.

**Materials:** Wood, Pulp, Plaster, Paint, Steel,  
Sealant

**Item Number:** LC-WARR-OYSTER-PERF

**\$8,235**

111 Rhode Island Street, Suite 1 San Francisco, CA 94103 P. 415 241 9300  
100 N Robertson Blvd, Los Angeles, CA 90048 P. 323 825 5880  
E. [info@coupdetatsf](mailto:info@coupdetatsf) [COUPDETATSE.COM](http://COUPDETATSE.COM)





Brent Warr is an artist and furniture maker who creates pieces that evoke emotion, allowing viewers to reach a more imaginative part of themselves. Warr designs and produces collectible furniture, lighting, and sculptural art by incorporating the mediums of plaster, epoxy, wood, and paint.

From his studio in Bainbridge, GA, Warr begins with abstract drawings, which he transforms into functional and sculptural forms. Building every piece by hand, Warr applies a complex mixture of plaster, pulp, and epoxy to his designs in layers, then meticulously sculpts and sands them to achieve objects of beauty. Working in a variety of mediums, he pushes the limits of material and craftsmanship; his pieces are described as bold, with visual depth but restraint.

As a child, his parents nurtured his creative ability by immersing him in nature and exposing him to antique furniture and art. This passion continued through his education and into his early career. He graduated from the College of Architecture, Design, and Construction at Auburn University and then went to work for esteemed firms Meyer Davis Studio and Yabu Pushelberg in New York City. These experiences honed his eye for design and exposed him to global collective design.



He launched his inaugural Woodfin Collection at IFCC in 2021, and it quickly gained recognition in the high-end design community; his works have been featured in esteemed publications, including Elle Decor, Architectural Digest, and Interior Design Magazine. His current body of work includes one-of-a-kind pieces, limited edition pieces, as well as a collection that can be ordered as production pieces and is highly customizable.

# NEW WORKS.

## Kizu Portable Table Lamp

Lars Tornøe

Balancing bold forms, the Kizu Table Lamp intrigues the eye with its sculptural composition, and this portable version of the lamp is no exception. Materials and expression are as we know them, but this cordless, smaller size is easy to move around where light is needed. With marble as the bearing element, the lamp obtains natural stability and the polished stone feels comfortable to the touch. As the light spreads from the entire upper part of the lamp, the small table lamp offers a high light output. A turned countersunk metal circle on the top of the lamp adds a refined detail to the design, and by tapping gently on the circle, the light can be dimmed to three different levels. The Kizu Table Lamp Portable has a battery life of 10 hours at a light setting of 100% and is charged with a USB-C cable.

## Specifications

### Product Name

Kizu Portable Table Lamp

### Designer

Lars Tornøe

### Category

Lighting

### Type

Portable Table Lamp

### Year

2022

### Material

Marble, Acrylic

### Colour/Variant

Breccia Pernice Marble, Rosso Levanto Marble,  
White Marble, Black Marble, Gris du Marais Marble

### Product Dimensions

H: 240 x Ø: 180 mm

### Packaging Dimensions

H: 300 x L: 230 x D: 230 mm

### Cord

USB-C charging cable, 2000 mm  
(fits 5V/2A universal USB adapter)

### Weight (incl. packaging)

1.75 kg

### Country of Origin

China

### Master Packaging

4

### Certification

CE, Class II, IP20

### Bulb

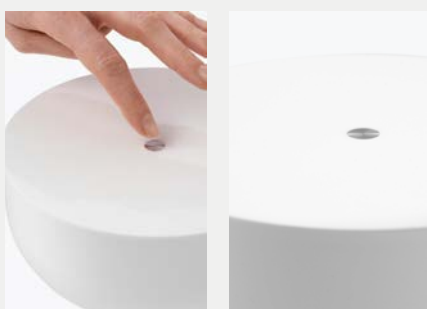
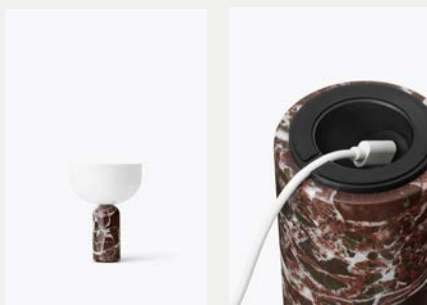
Light source included

### Light Source

2,5W LED, 2700 K  
Operating time: 10-11 hours (at 100% brightness)  
Charging time: 7,5 hours (0-100%)

### Dimmability

Integrated three-step dimmer



\$223

Available online at Finnish Design Shop

Frederiksgade 1, Ground Floor  
1265 Copenhagen, Denmark

info@newworks.dk  
+45 7230 9999

### Safety Precautions

The lamp is only intended for indoor use. This product contains a Li-ion battery. Misuse of the battery may lead to potentially hazardous outcomes. In case of smoke, battery swelling, or an odor while charging, terminate charging immediately. New Works Aps does not take responsibility for battery failure prompted by unintended use.

### Cleaning

Wipe the product with a soft dry or moist cloth. Do not use any abrasive cleaning tools, and never use strong cleaning agents such as household glass cleaner, white spirit, or turpentine.



# Hopscotch



Reminiscent of the classic playground game, the Hopscotch Collection features a textural basketweave pattern. Available in five natural tones, this 100% sisal is a great textural base for any style.

Fiber: Sisal- Designer  
Collection: Hopscotch  
Pattern: Textured Loop  
Width: 16'3"  
Fiber Composition: 100% Sisal  
Backing: Latex  
Construction: Woven

**Contact**  
Lynn Edmeyer Home  
925.997.1755  
952 School St. #119  
Napa, CA  
94559

Selected Color: Aged Asphalt





**Curtains**

*Susan Lind Chastain Inc.*

Fabrics used: Sofia in Malt by Villa Nova,  
Bonsai in Indigo by Mark Alexander

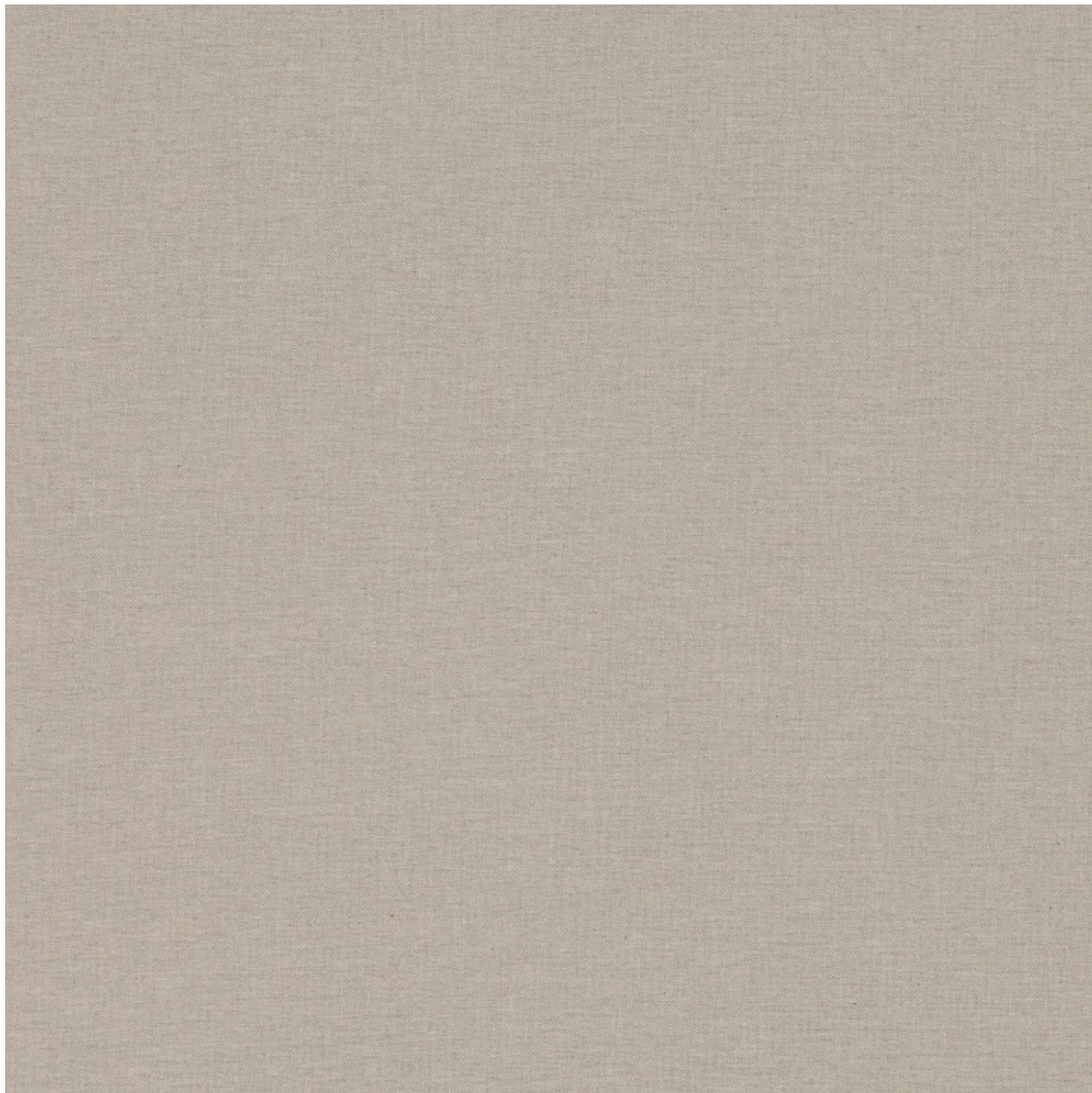
**Contact**

Susan Lind Chastain Inc.  
415.701.8898  
1330 Natoma Street  
San Francisco, CA  
94103



# VILLA NOVA

---



## Sofia Malt

V3394/09

Cotton Plain  
Collection: Sofia

39 Available Colours



MARK ALEXANDER



## Bonsai Indigo

M663/05

Printed Linen  
Collection: Eclectic Linen Prints

6 Available Colours





STUDIO VAN DEN AKKER  
ROB COPLEY + SEAN ROBINS

## JAMES BEARDEN

James Bearden is an abstract artist, creating sculpture full time since 2007. His studio is located in Des Moines, IA. His work is based on the figure and the body in motion. He works in series named, *Cathedral*, *Assemblage*, *Voids*, *Lunar Blooms* & *Animals*.

Bearden was born in the Southern region of the United States and raised in the Midwest. He earned a BA in Fine Art and a BA in Visual Communications from Grandview College in Des Moines, IA. Upon graduation, he worked in graphic design for 20 years. 17 of those years, he was Art Director for a large advertising agency based out of Des Moines. He received 52 Addy Awards.

After the economic fallout of 9/11, Bearden found he could no longer sustain a full-time living in the graphics art career. While working freelance in a reduced market of graphics design, he began to learn how to work with metal and create sculptural art. In 2013, he expanded his range to include functional works, including cabinets, lamps and tables.



**Moon Pool Fire Screen by  
James Bearden**

**\$5,270**

de sousa hughes

101 Henry Adams Street

Showroom 272

San Francisco, CA 94103 PHONE

415.626.6883

**39"W, 12"D, 28.5"H**



**Tree, water hyacinth and rattan basket  
Kalman Varga Design**

\$950

**Contact**

Kalman Varga Design  
805.975.7157  
552 Vermont Street  
San Francisco, CA  
94107



**Artwork by Dan Jackson**

Not for sale

**For additional works, contact**  
Dolby Chadwick Gallery  
415.921.8880  
210 Post Street , Suite 205 San  
Francisco, CA  
94108



## About The Artist

Background information.



Still-life has always been fascinating to me and I have dedicated much of my career to exploring the genre. Based in Delaware, I keep a studio at the Delaware Center for the Contemporary Arts. A lifetime of interest in the fine arts drove me to seek a Bachelors degree in Painting and Printmaking at Virginia Commonwealth University and later to the University of Delaware for a Masters degree in Studio Arts. Among the awards I have received are an Established Professional fellowship from the Delaware Division of the Arts and a Masters Grant from the Joan Mitchell Foundation. I have exhibited widely and I am represented by Dolby Chadwick Gallery in San Francisco. I am married and spend my hours out-of-the-studio enjoying time with my wife and two children.

© All images on this site remain the exclusive copyright of Daniel Jackson.



**Artwork by Matt Lipps**

Not for sale

**For additional works, contact**  
Jessica Silverman Gallery  
415.255.9508  
621 Grant Avenue  
San Francisco, CA  
94108

# Matt Lipps

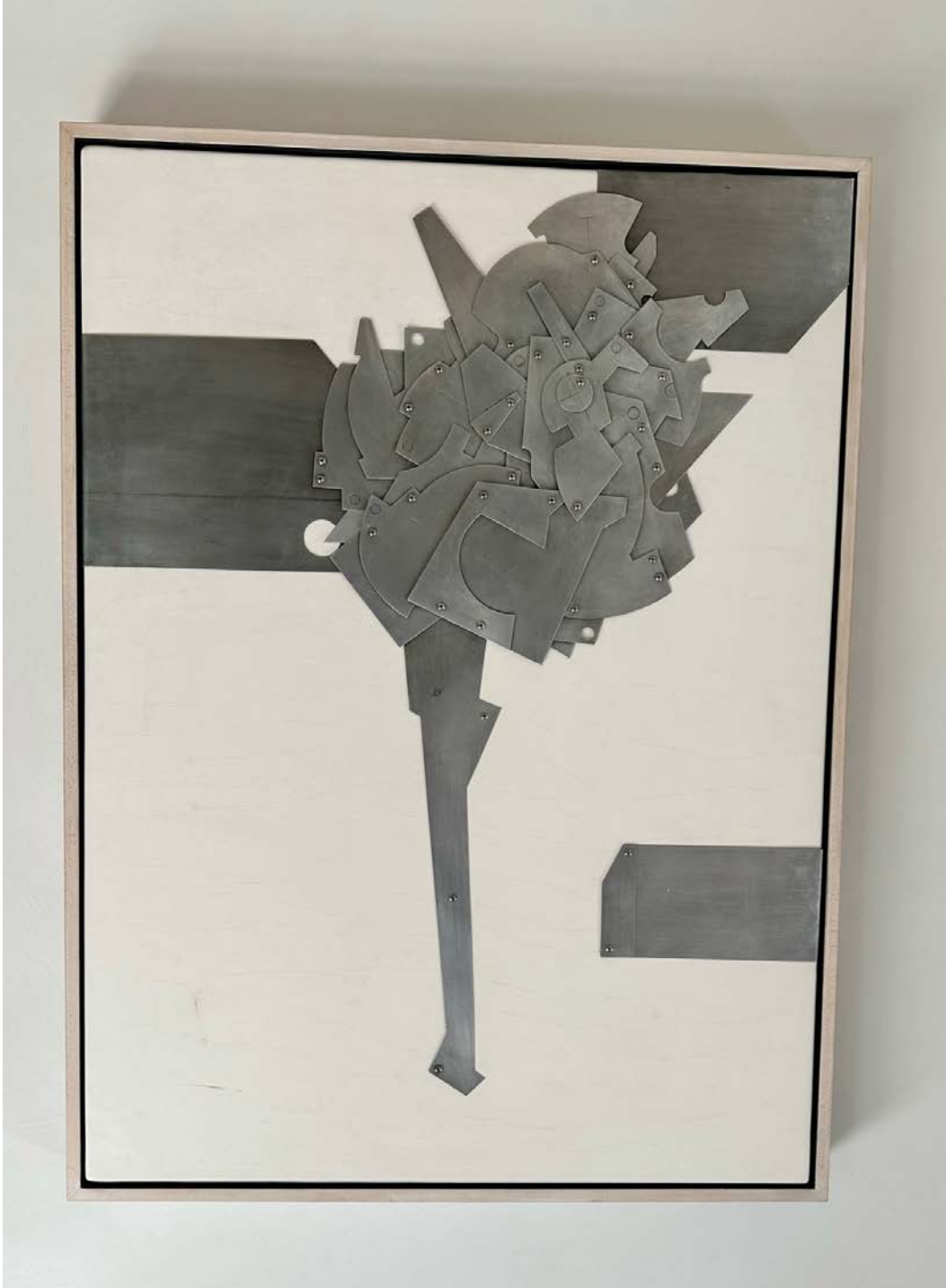
*The Body Wants to Live*  
*Where Figure Becomes*  
*Ground / Solve for X*  
*Looking Through Pictures*  
*Soliloquies*  
*Figures*  
*Library*  
*HORIZON/S*  
*Home (2008)*

Matt Lipps refers to his practice as being "*in, with, and alongside* photography," to call attention to the profound ways in which we relate to notions of 'the photographic' as a shared historical artifact, a means of social engagement, and a material object. Employing collage strategies, sculptural tropes, and theater staging, he constructs three-dimensional compositions of appropriated images from high and low culture made into autonomous paper-dolls to be re-photographed. The newly-positioned constellation of images invites dialog about how photographs reflect and shape our ideas of self and other, the worlds we inhabit, and how we move through them.

Matt Lipps (b. 1975) has a BFA in Photography from California State University, Long Beach and an MFA from University of California, Irvine. His work is in the permanent collections of The Getty, LACMA, SFMOMA, MOCA Los Angeles, the Hammer Museum (Los Angeles), the Saatchi Gallery and the Pilara Foundation/Pier 24 (San Francisco). He has also participated in exhibitions at MCA Chicago, J. Paul Getty Museum, Museum of Contemporary Art Detroit, SFMOMA, Klemm's (Berlin), and Art In General (New York). Lipps is represented by Marc Selwyn Fine Art (Los Angeles), Jessica Silverman Gallery (San Francisco), Yancey Richardson Gallery (New York), and Josh Lilley Gallery (London).

Matt lives and works in Los Angeles, CA.

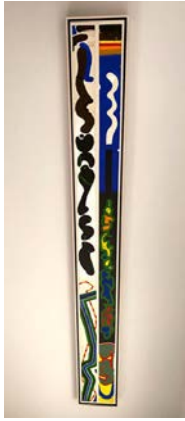




**Artwork**  
*Artist Unknown*

Not for sale

# HACKETT MILL



## Charles Ginnever (1931 - 2019)

### *Sound Score VI*

9.25 x 89 inches framed dimensions: 10.75 x 90.5" x 2 inches

acrylic/ paper

1962

\$75,000

### **Provenance:**

The Artist

Hackett Freedman Gallery

Private Collection, CA

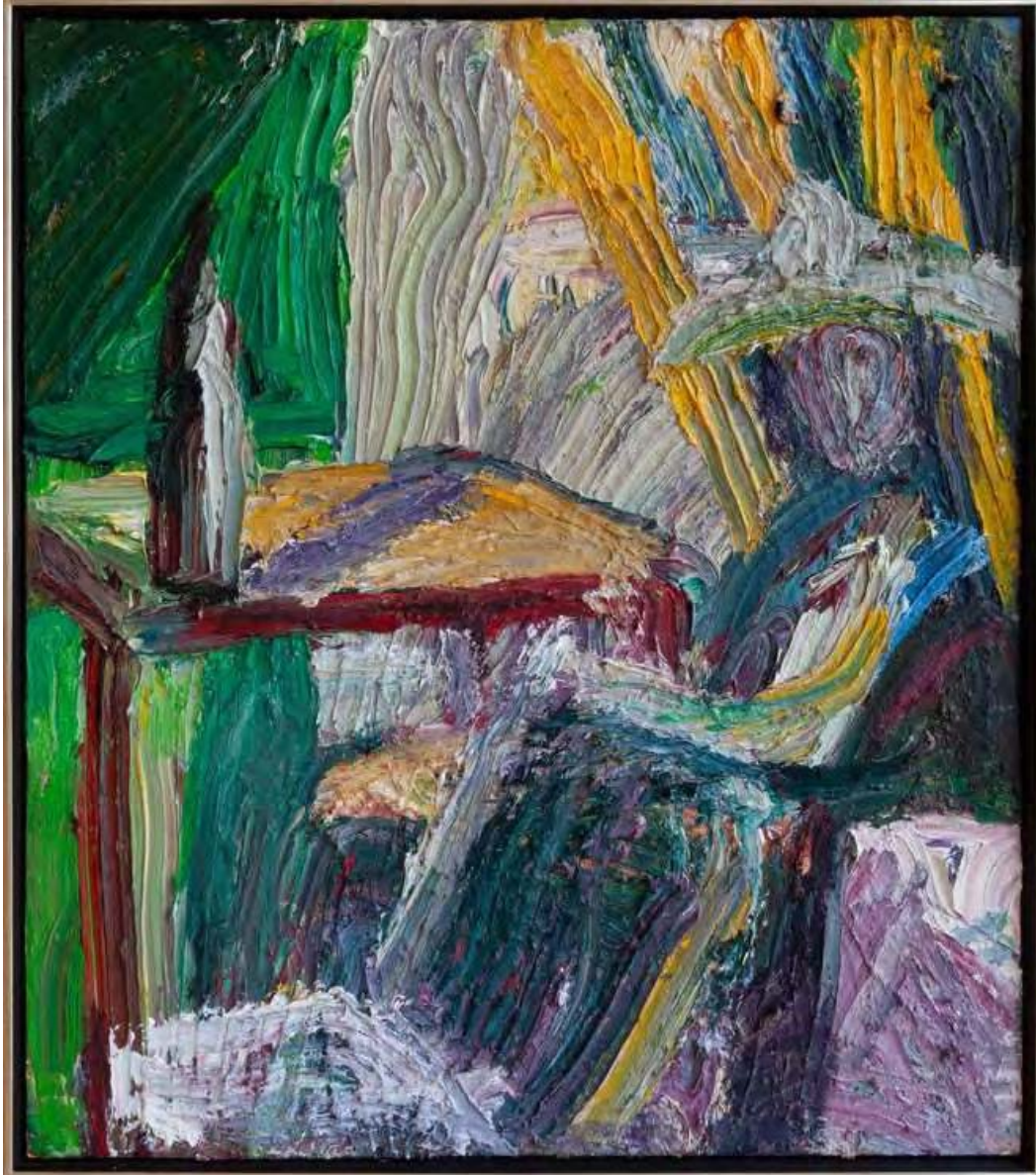
Hackett Mill

### **Commentary:**

Internationally acclaimed, Charles Ginnever was a sculptor and painter who created large-scale public works of art meant to challenge the traditional Western idea of perspective and create depth. By locating the large-scale works of art outside, Ginnever's sculptures were placed in conversation with the architecture and natural elements that surrounded them. Throughout his 60-year career, Ginnever explored simple planar geometric forms, manipulating them to build complexity and movement as you view the sculptures in the round.

Born in San Mateo, CA, his deceptively simple geometric structures challenge the viewer's visual perception and sense of space. In the 1960s and 1970s, he was a leading figure, along with fellow Californian Mark di Suvero, in the resurrection of outdoor sculpture and public art in the United States. Ginnever's monumental, but unexpectedly delicate, sculptures—some of which extend 30 or 40 feet—are often characterized by flat planes of steel that appear to shift in form depending on the angle from which they are viewed. As a result, the sculptures open and close, grow from fat to thin, as the viewer moves around them. Like his predecessor David Smith, Ginnever is inspired by abstract expressionism, infusing his sculpture with a similar kind of energy. Rooted in minimalism, the sculptures have been referred to as "geometric drawings in space."

The performance art movement (Happenings!) that began in the late 1950's provided Ginnever with an outlet for his sense of humor and love of collaboration. The Sound Scape series were created by Ginnever for multimedia events he produced as part of a series of Artist Carnivals that took place in 1962. Eva Hesse and Tom Doyle assisted in designing the costumes and performing the piece. The paintings on rolls of paper used for cash registers were actually scores performed by the audience using musical instruments and various noise implements.



**Terry St. John**

*Cal Girl, 2020*

48" x 42" (49" x 43" framed)

Oil on canvas

\$100,000

**Contact**

Dolby Chadwick Gallery

415.921.8880

210 Post Street , Suite 205

San Francisco, CA

94108



DOLBY CHADWICK GALLERY



## Terry St. John

---

A prominent member of the Bay Area art community for over five decades, Terry St. John was renowned for his thickly layered, chromatic paintings of lush, abstracted natural settings and, later, figures situated within environments he termed “living-room landscapes.” Exhibiting an incredibly palpable sense of air and movement, strong contrasts between light and shadow, and kaleidoscopic arrangements of color, St. John’s paintings distill our fragmented worlds into harmonious, vital wholes.



**Guy Diehl**

*Canaletto with Magnolia, 1998*

30" x 36"

Acrylic on canvas

\$42,000

**Contact**

Dolby Chadwick Gallery

415.921.8880

210 Post Street , Suite 205

San Francisco, CA

94108

DOLBY CHADWICK GALLERY



## Guy Diehl

---

Guy Diehl draws on Photorealism to create richly rendered, jewel-toned still lifes that approximate reality without mimicking it. Light and luminosity play a central role in his paintings, generating visual magic and an allusive alchemy while also evoking strong, sometimes unexpected, emotional responses within the viewer. As art about art, his work explores the history of art history—from Post-Impressionism to twentieth-century abstraction—often by referencing other artists.





**Armando Di Nunzio**  
*Verso l'alto*

**Contact**  
Jay Jeffers  
415.921.8880  
1035 Post Street San  
Francisco, CA  
94109



**Stefan Schöning**  
*Langkawi Masks*

\$950 each

**Contact**

Jay Jeffers  
415.921.8880  
1035 Post Street San  
Francisco, CA  
94109





**Alonpi**  
*Bach Plaid Cashmere Throw*

**Contact**  
Jay Jeffers  
415.921.8880  
1035 Post Street San  
Francisco, CA  
94109





**Giobagnara**  
*Nodo Leather Pouf*

**Contact**  
Jay Jeffers  
415.921.8880  
1035 Post Street San  
Francisco, CA  
94109





**Canoa Lab**  
*Lutroforo Vessel*

**Fielding Clay Works**  
*Nettle*

**Contact**  
Jay Jeffers  
415.921.8880  
1035 Post Street San  
Francisco, CA  
94109